



From left: Sharon Beesley, Stephanie Paiva Sanderson, Kiera Petty, Marco Montarsolo (seated), Chris Buchan, Brenda Lehmann, Domonique Rivas, Alan Doughty and Saul Froomkin

The Rise of ISIS Law

When Marco Montarsolo and Sharon Beesley decided to establish ISIS Law in 2008, in the middle of the global economic crisis, it was a discouraging time. Yet five-and-a-half years later, ISIS Law is a thriving boutique law firm boasting nine lawyers, seven support staff and a reputation as a mould-breaking and dynamic firm. In August 2013, ISIS Law grew out of their modest office in the old Crow Lane Bakery building and moved into Andrew's Place on Church Street. Stepping into their bright and airy penthouse overlooking Hamilton Harbour, one can immediately appreciate this is a firm fast becoming a major player in the Bermuda legal-services landscape.

ISIS Law specialises in corporate and commercial law, investment funds, banking, finance, insurance and litigation, and in a few short years has made great strides in expanding its legal capabilities. The firm has recently worked with some of Bermuda's most sophisticated businesses on market-leading transactions and has seen new overseas investors injecting capital into commercial enterprises in Bermuda. Significant recent transactions include the acquisition of Butterfield Fulcrum Group by Mitsubishi UFJ Financial Group and its subsequent acquisition of the Meridian Group; the acquisition by Clarien Group of a controlling stake in Capital G Group; and the acquisition of Alea

Group Holdings (Bermuda) Ltd. and American Safety Reinsurance Ltd. by subsidiaries of Catalina Holdings (Bermuda) Ltd. ISIS Law is also supportive of several small- to mid-size local businesses. Yo Cherry, a popular new frozen yogurt retail enterprise on Bermudiana Road, is just one example of the successful smaller companies ISIS Law has worked with.

ISIS Law's burgeoning reputation is also attracting a number of top lawyers to the firm, including the well-known litigator Saul Froomkin, OBE, QC, who has been with the firm since 2012 and is a director and the head of the firm's litigation department. In turn, ISIS Law's strategy to attract key talent has fuelled its rapid growth.

Looking back on the firm's progress over the last few years, cofounder and director, Beesley, says, "Perhaps the most remarkable part of ISIS Law's success is that we have achieved this at a time when most firms have been cutting back." Beesley attributes the firm's success to two main factors: ISIS Law's unique "boutique" approach and its special relationship with Bermuda.

The term "boutique" refers to a culture in which client satisfaction is the ultimate goal. By virtue of the nimbleness resulting from the firm's size and structure, the expertise at ISIS Law can be tailored to the client's individual needs and the lawyers can be very personal, flexible

ISIS Law is also committed to the wider community through partnering and supporting local not-for-profits. Its team has been involved with such organisations as Caron Bermuda, Summerhaven, The Women's Resource Centre and the Bermuda Equestrian Federation. In addition, ISIS Law partners

When asked what he sees as the defining elements of ISIS Law, Montarsolo concludes, “We are a very family-oriented firm and have been fortunate to bring such an interesting team together and look forward to growing our practice and increasing our client base. We believe we have broken the mould of the traditional law firm and want to thank our clients who have been with us through the more difficult times. As we look to the future we know we will be judged by our actions and our work ethic and we welcome the opportunity to show what we are made of. ISIS Law is a firm that is looking forward to a positive future, for itself and for Bermuda.”

BERMUDA
ARTS
CENTRE
AT DOCKYARD

We are keeping Bermuda Art Alive with...

- 4 working studio artists
- New shows featured every month
- Workshops offered throughout the year
- A gift shop filled with locally made items
ceramics – jewellery – dolls – ornaments
cedar works – and much more
- Largest selection of Bermuda prints on the island

Local and international membership welcomed

Open 7 days a week:
10: 00 a.m. - 5:00 p.m.



DEEP SEA FISHING

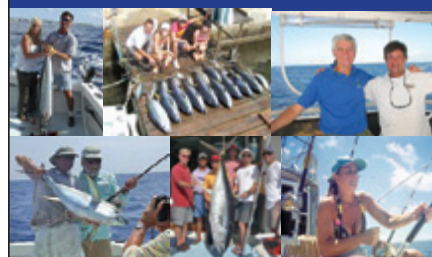


**43' TORRES SPORTS FISHER,
AIR-CONDITIONED & SPACIOUS**

YELLOWFIN TUNA SPECIALISTS



If you want to experience the thrill of Deep Sea Fishing but have limited fishing knowledge, don't worry! You will be expertly coached every step of the way and with over 25 World Records, YOU may be the next World Record Holder!



CAPTAIN KEVIN WINTER

Playmate Charters, 4 Mill Point Lane, Pembroke,
Bermuda, HM 05

OFFICE TEL: (441) 292 7131

CELL: (441) 799 8862

EMAIL: playmate@logic.bm

www.playmatefishing.com